

INTERNATIONAL WEIGHTLIFTING FEDERATION

---

**IWFF**

---

**GUIDELINES**

---



**IWFF**

**TO  
UNIFORM**

---

## IWF Technical Official Uniform

### IWF TCRR 7.2.3

- **Navy blue jacket** – see guidelines below
  - Navy blue color code: PMS2767
  - single breasted (with 2 buttons) regular style suite/blazer
  - pocket on the left side of the chest for TO badge
  - dark (blue or black) buttons
- **Navy blue trousers / skirt** – see guidelines below
  - Navy blue color code: PMS2767
  - regular style trousers / knee length skirt
- **White shirt** – see guidelines below
  - pocket on the left side for TO badge
- **IWF tie / scarf**
  - New tie / scarf will be provided by IWF
- **Black shoes**
  - dress shoes (no sport shoes or boots)
- **IWF TO metal badge; pinned on the left lapel of the jacket**
  - TO badge on the pocket on the left side

### Introduction Timeline:

- **until 31 December 2016 both the old and new Uniform and logo accepted**
- **from 1 January 2017 only the new Uniform and logo accepted**

## IWF Technical Official Uniform

### Instructions for the tailor

**Colour for suit/costume: Navy Blue (Pantone code: PMS 2767)**

**Dark blue/black buttons**

**Suggested fabric: SUPER 100 wool (comfortable in summer or winter), eventually with 2-3% Lycra**

### **MEN**

Jacket/Blazer: Classic, slim cut, without stitching

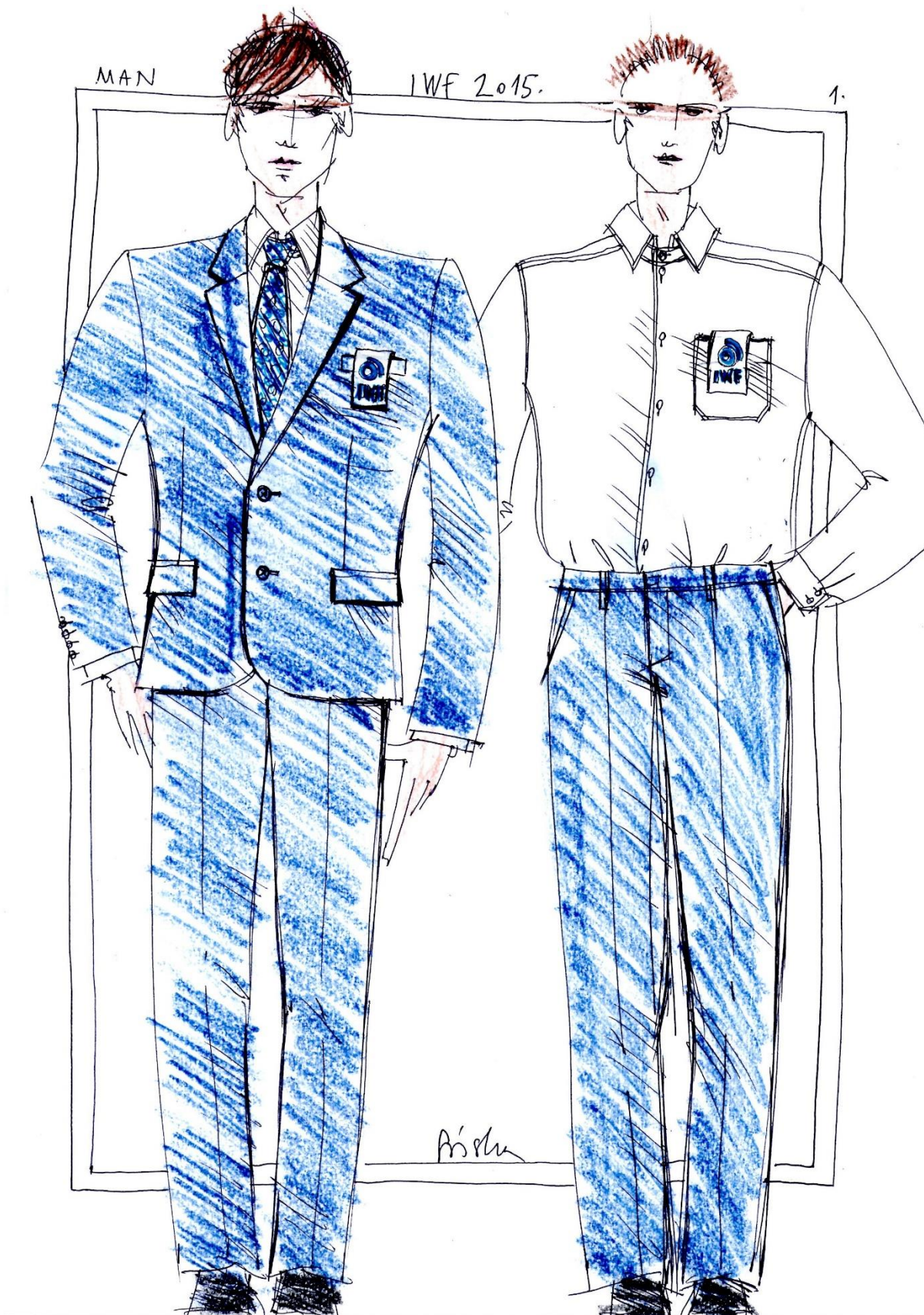
- regular, suit-style jacket/blazer, single-breasted, narrow, straight notched lapel
- 2 buttons, lower button in pocket height
- 2 front pockets with piping, square format
- breast pocket on the left side of the chest – **horizontal** (IWF will supply clip-on TO badge)
- sleeves with fly, 4 small buttons
- front bottom rounded
- on the back one fly in the middle, overlapping

Trousers:

- classic, with Swedish pockets
- straight cut
- on the back 2 back pockets with piping

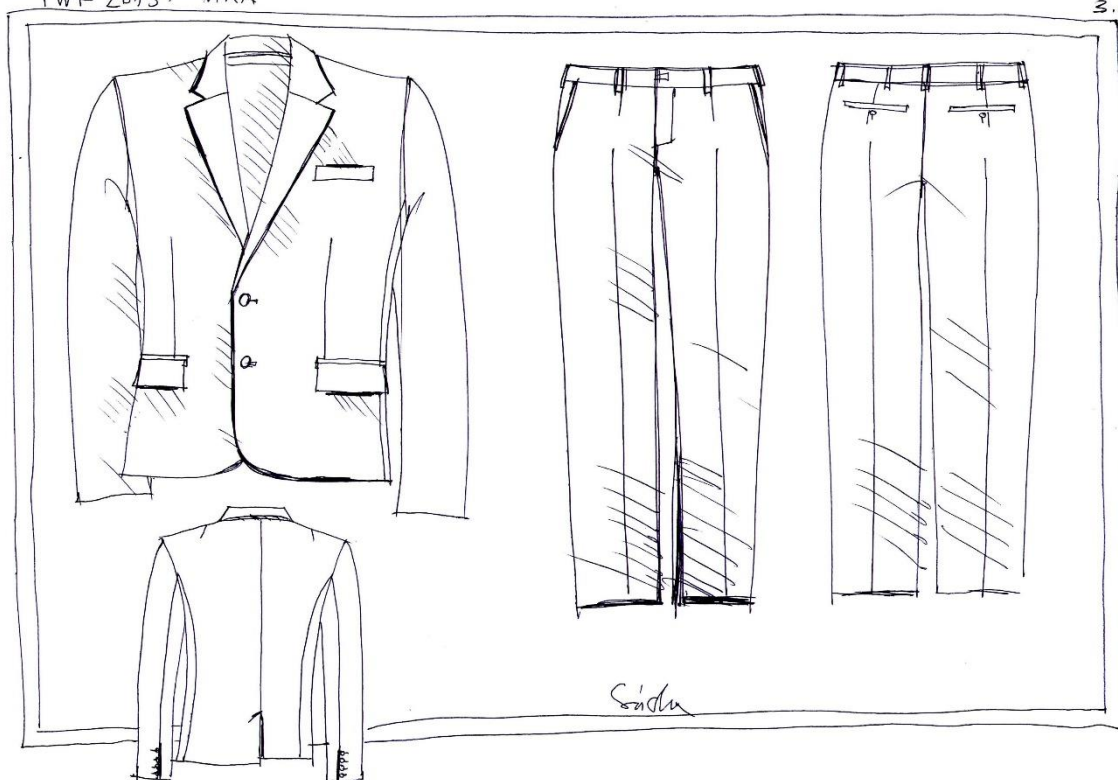
Shirt: white

- suit shirt, collar slightly cut
- breast pocket sewn on, for TO badge
- long sleeves or short sleeves



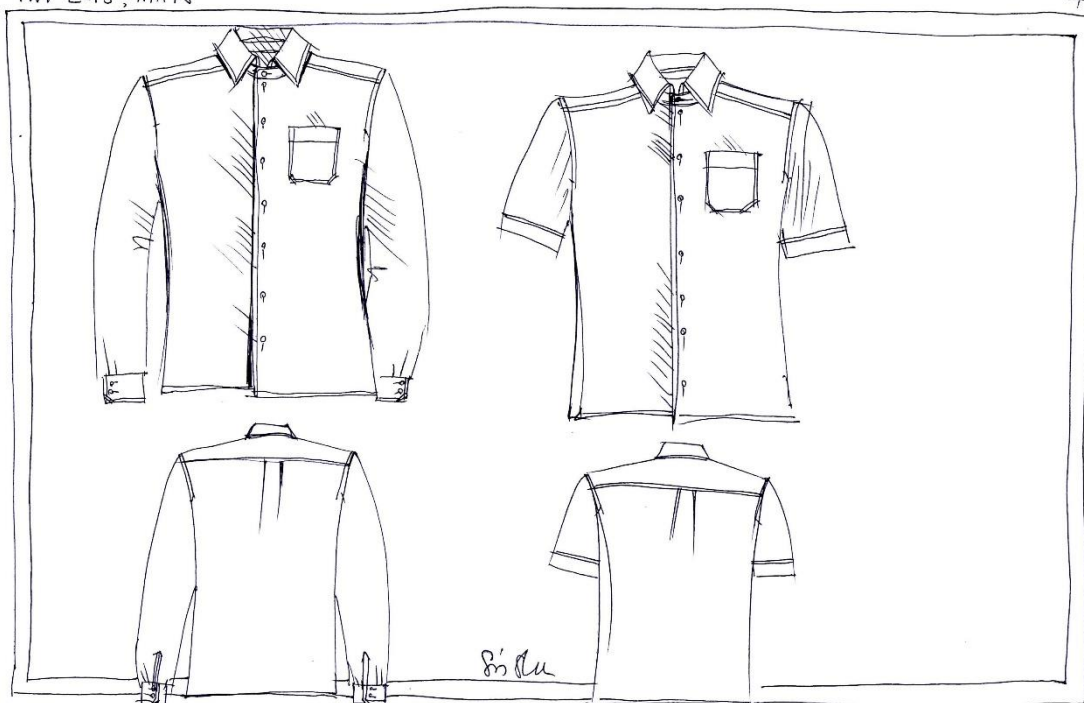
IWF 2015. MAN

3.



IWF 2015, MAN

4.



## IWF Technical Official Uniform

### Instructions for the tailor

**Colour for suit/costume: Navy Blue (Pantone code: PMS 2767)**

**Dark blue/black buttons**

**Suggested fabric: SUPER 100 wool (comfortable in summer or winter), eventually with 2-3% Lycra**

### **WOMEN**

Blazer: Classic, slim cut, without stitching

- 2 buttons, lower button in pocket height
- waist length
- 2 front pockets with piping, square format
- breast pocket on the left side of the chest – **horizontal** (IWF will supply clip-on TO badge)
- sleeves with fly, 4 small buttons
- on the back one fly in the middle, overlapping

Pants:

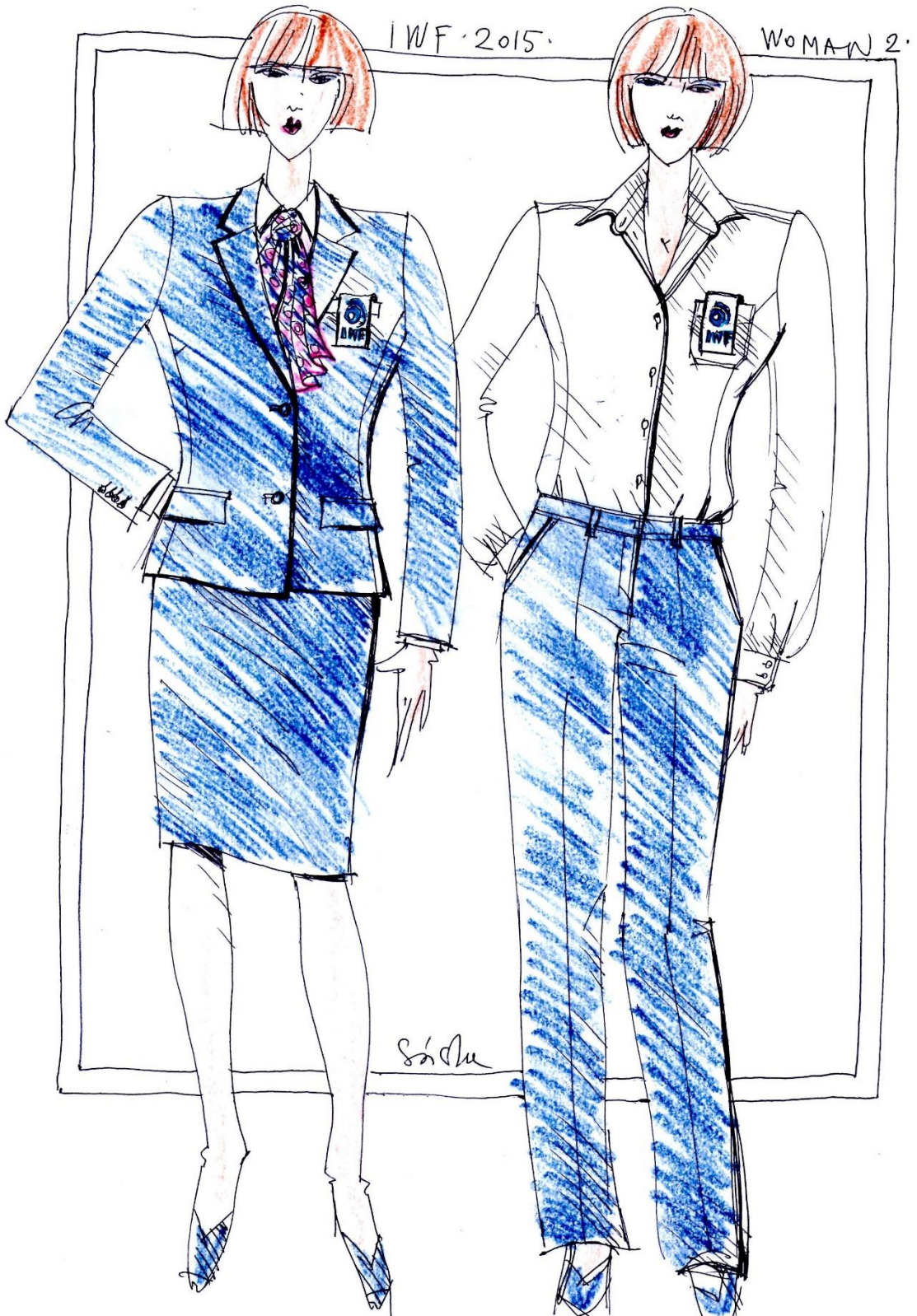
- straight cut, ironed edge
- 2 Swedish pockets
- waistband with loops for belt

Skirt:

- pencil skirt, knee length! (covers the knees)
- no waistband
- on the back one fly in the middle, overlapping

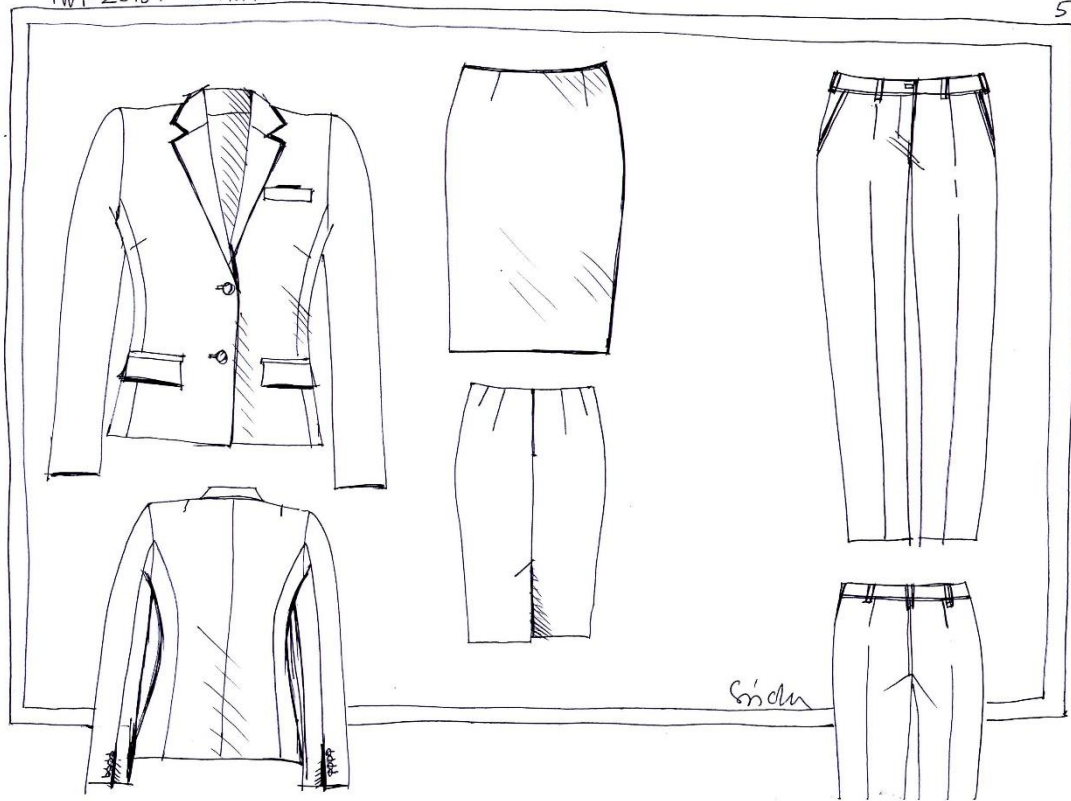
Blouse: white

- long sleeves or short sleeves
- small collar
- slightly cut
- breast pocket sewn on, for TO badge



IWF 2015. WOMAN

5.



IWF 2015. WOMAN

6.

